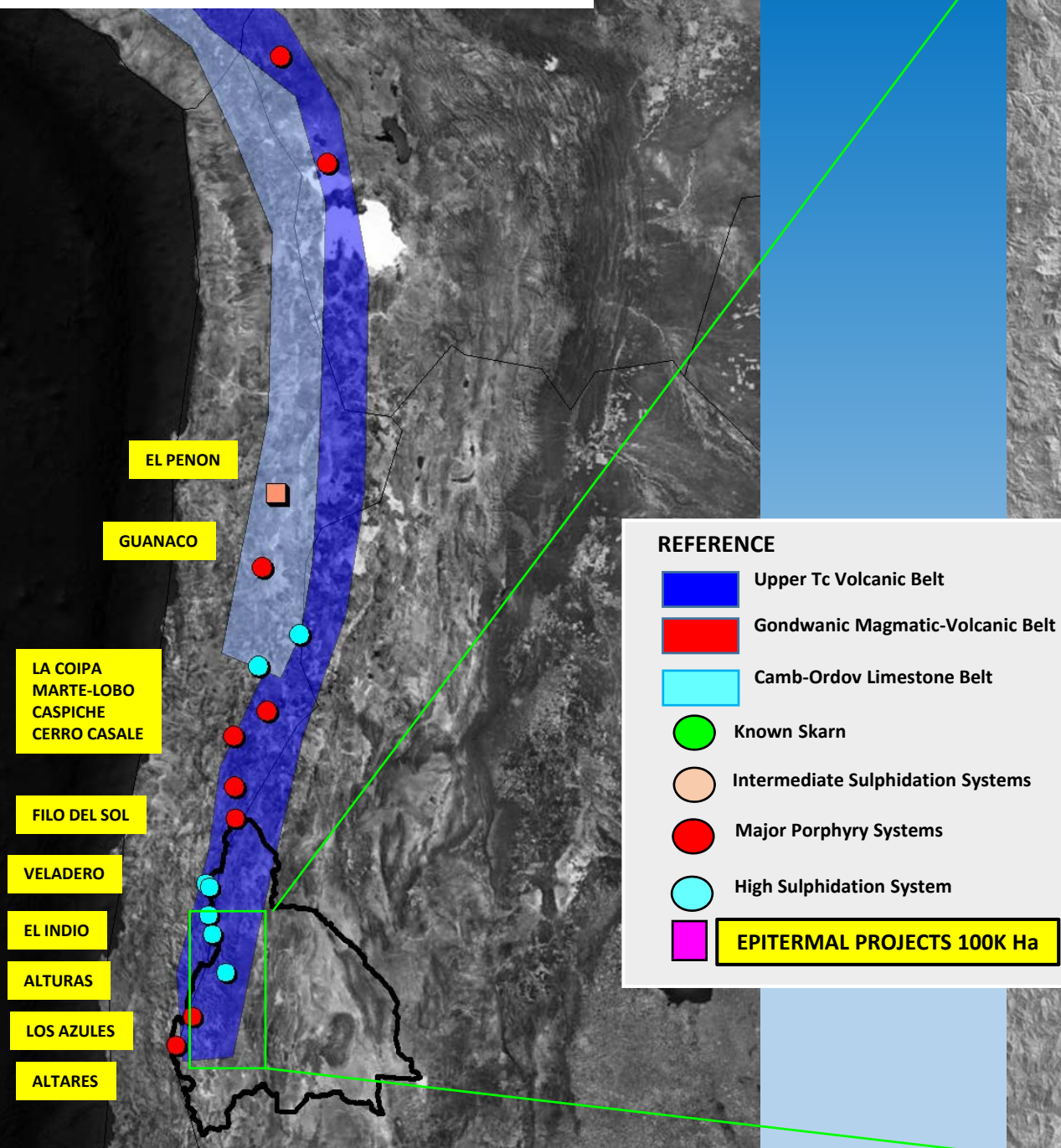


EPITERMAL II:

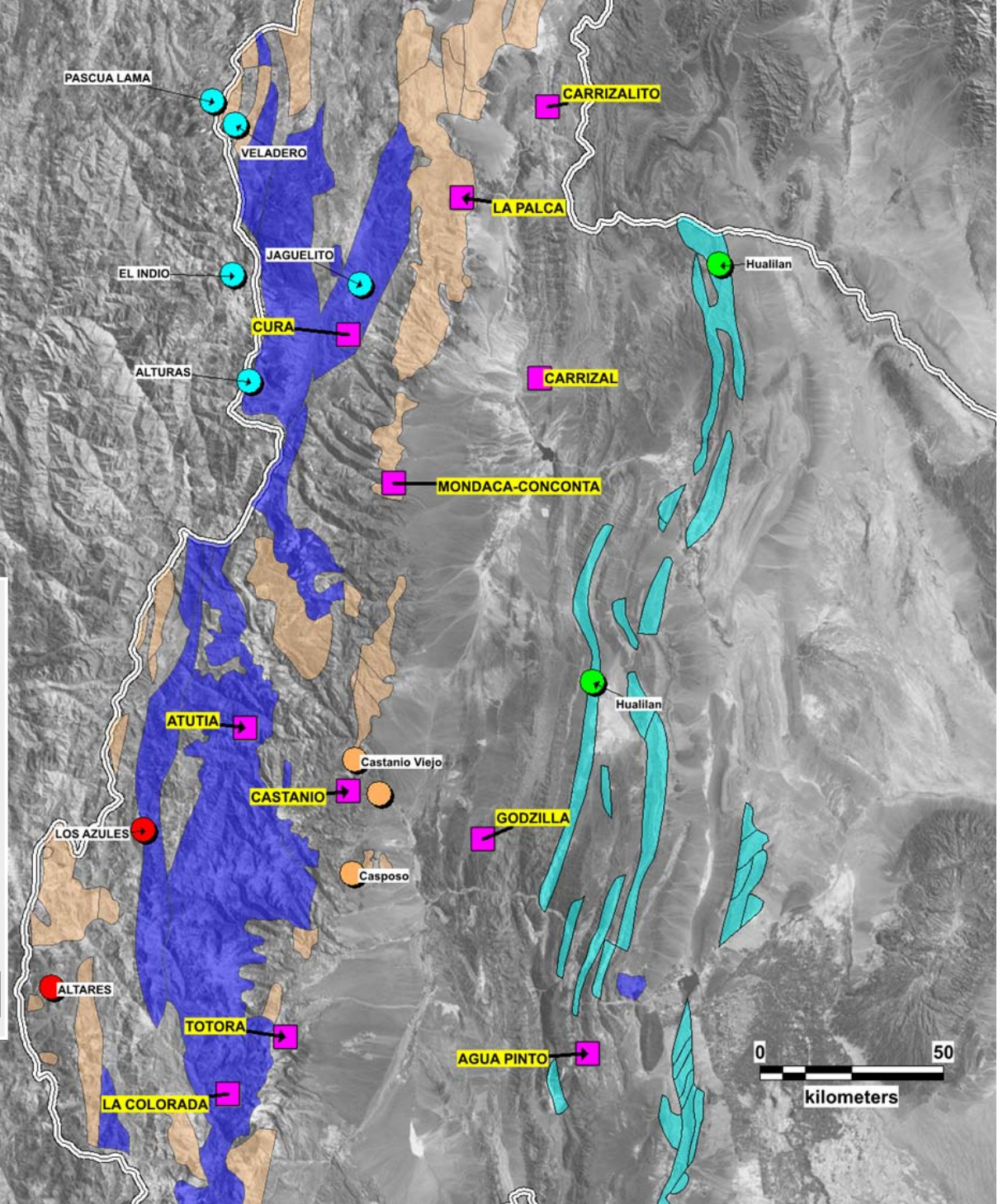


LOCATION OF EPITHERMAL II PROJECTS



REFERENCE

- Upper Tc Volcanic Belt
- Gondwanic Magmatic-Volcanic Belt
- Camb-Ordov Limestone Belt
- Known Skarn
- Intermediate Sulphidation Systems
- Major Porphyry Systems
- High Sulphidation System
- EPITHERMAL PROJECTS 100K Ha**



LA PALCA

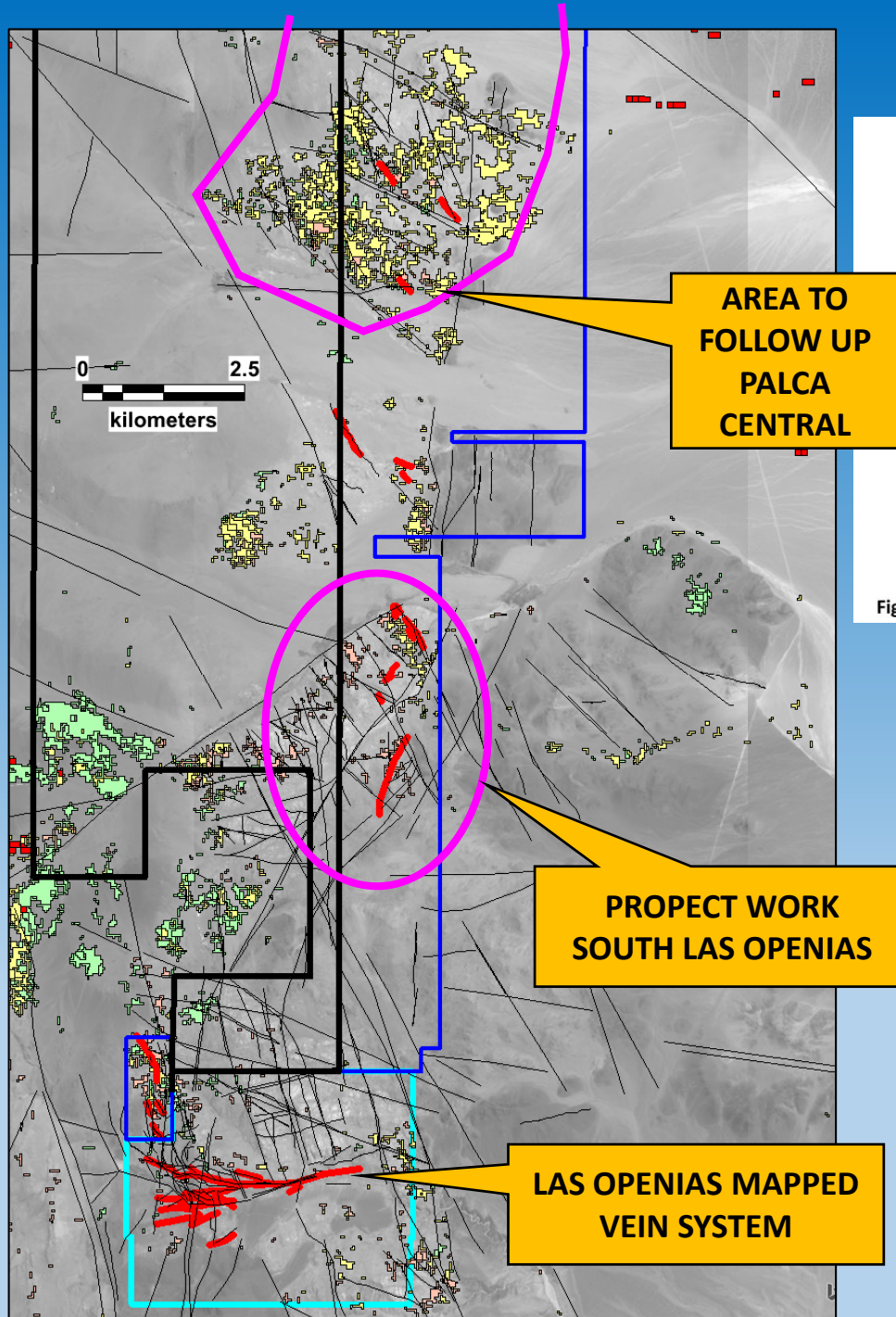
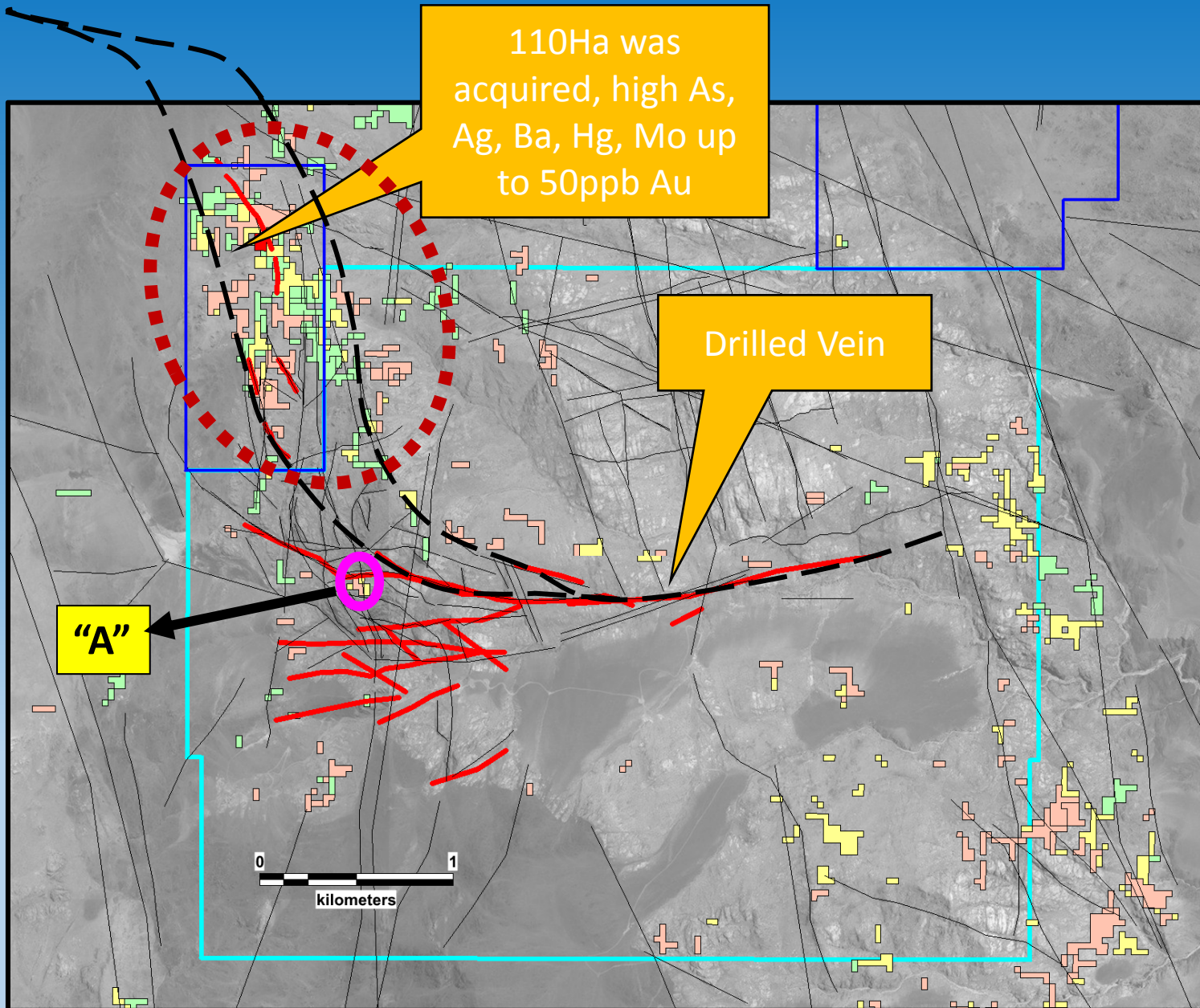


Figure 3: Example of vein breccia texture at new Presagio East Target.



Las openias & Epitermal II New Adquisition Target:

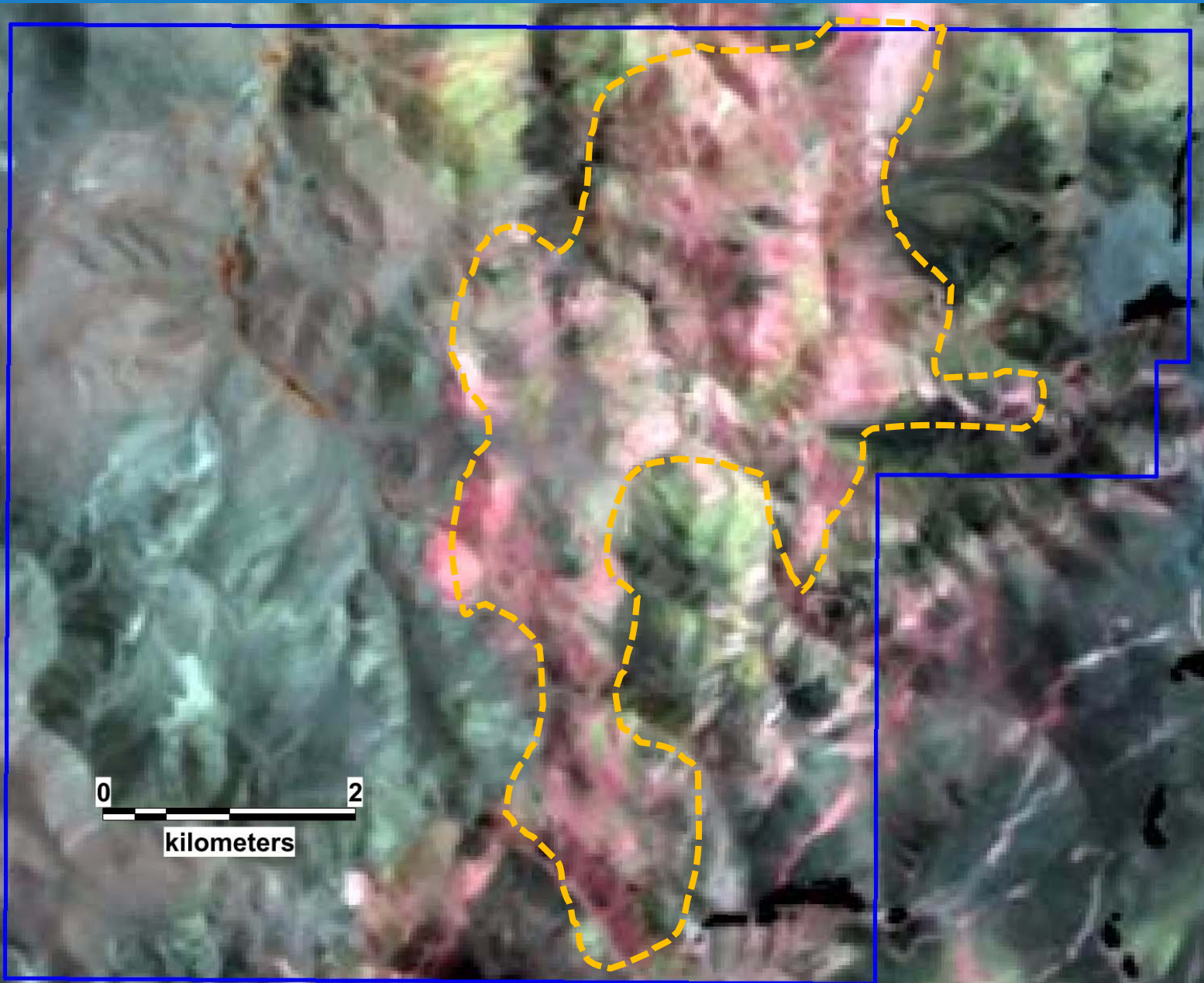


A possible sigmoide fault TARGET could be possible when analyzing detail structure of Las Openias Target. The 1.3km of greater amount of clay alteration (Aster) in +300mRL ground within Epitermal 110 Ha ground could make an Interesting area to follow up.

- La Palca System located 4km South of this area Has RL of 3450-3500m with Qz Vein outcropping At higher RL than Las Openias At 3280-3330m RL.

Previous samples D.H. near "A": contained 0.8m with 17.9 g/t Gold, 225 g/t Silver, and 1.0m with 2.4 g/t Gold, 597g/t Silver. Last PR od D.H. reported **70m** Mineralized BX with Vissible Gold in zone "A" and new finding in the NORTH!!!

CURA AREA:

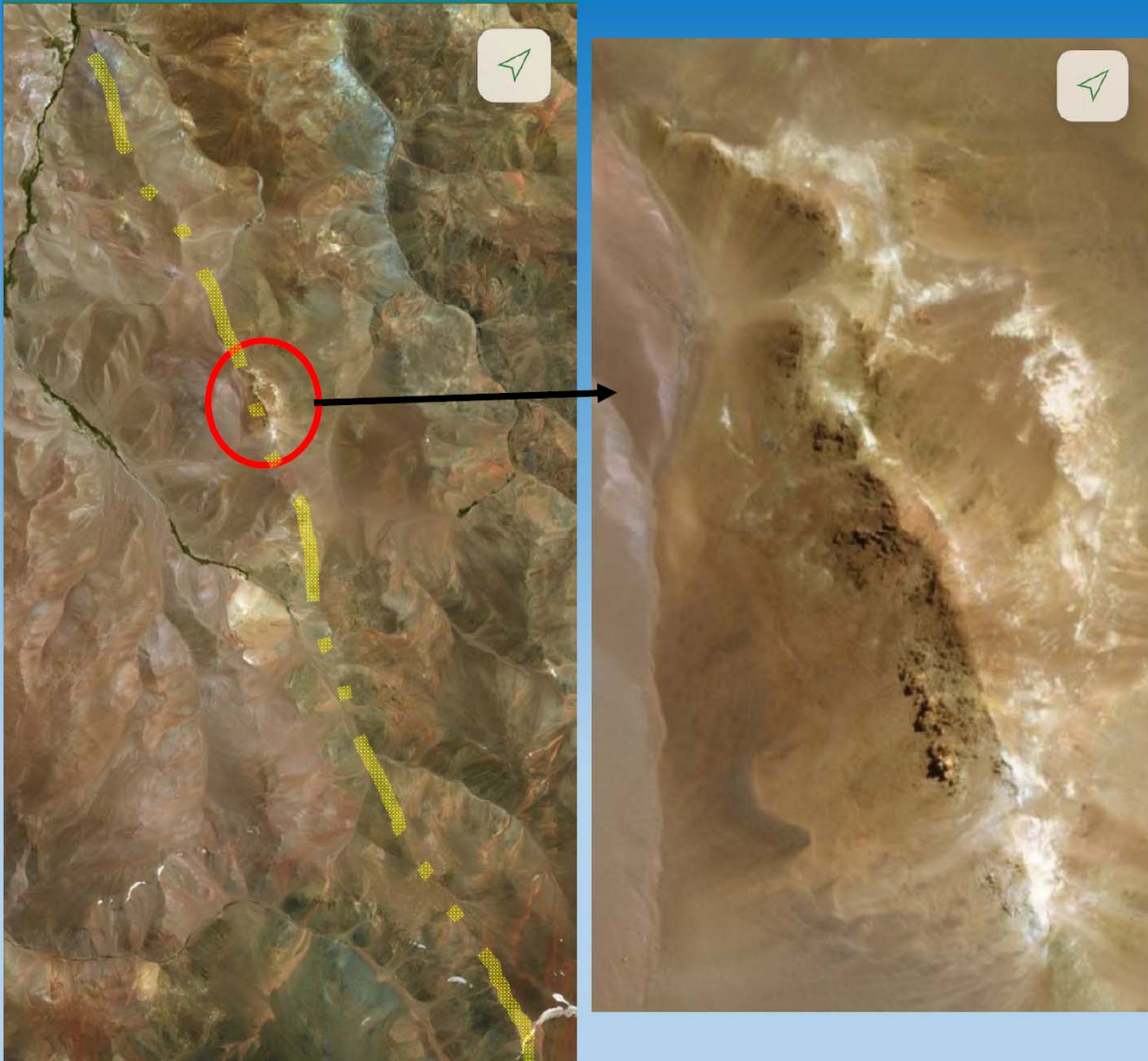


ASTER IMAGE 2018

- ✓ Tenements 6K Ha in Valle del Cura, Where Veladero-Pascua Lama Deposits are located
- ✓ At 4km South from High Sulphidation Project Jaguelito >250K Oz Au estimated Currently under Exploration (IPEM)
- ✓ Located 3km from Porphyry “Poncha” Drilled by Teck Cominco in early 2000
- ✓ Aster indicate potential for Intermediate Sulphidation, strong Silica-Illite Alteration With minor Kaolinite-Alunite
- ✓ The area was covered by Teck in 2003 But it was never explored

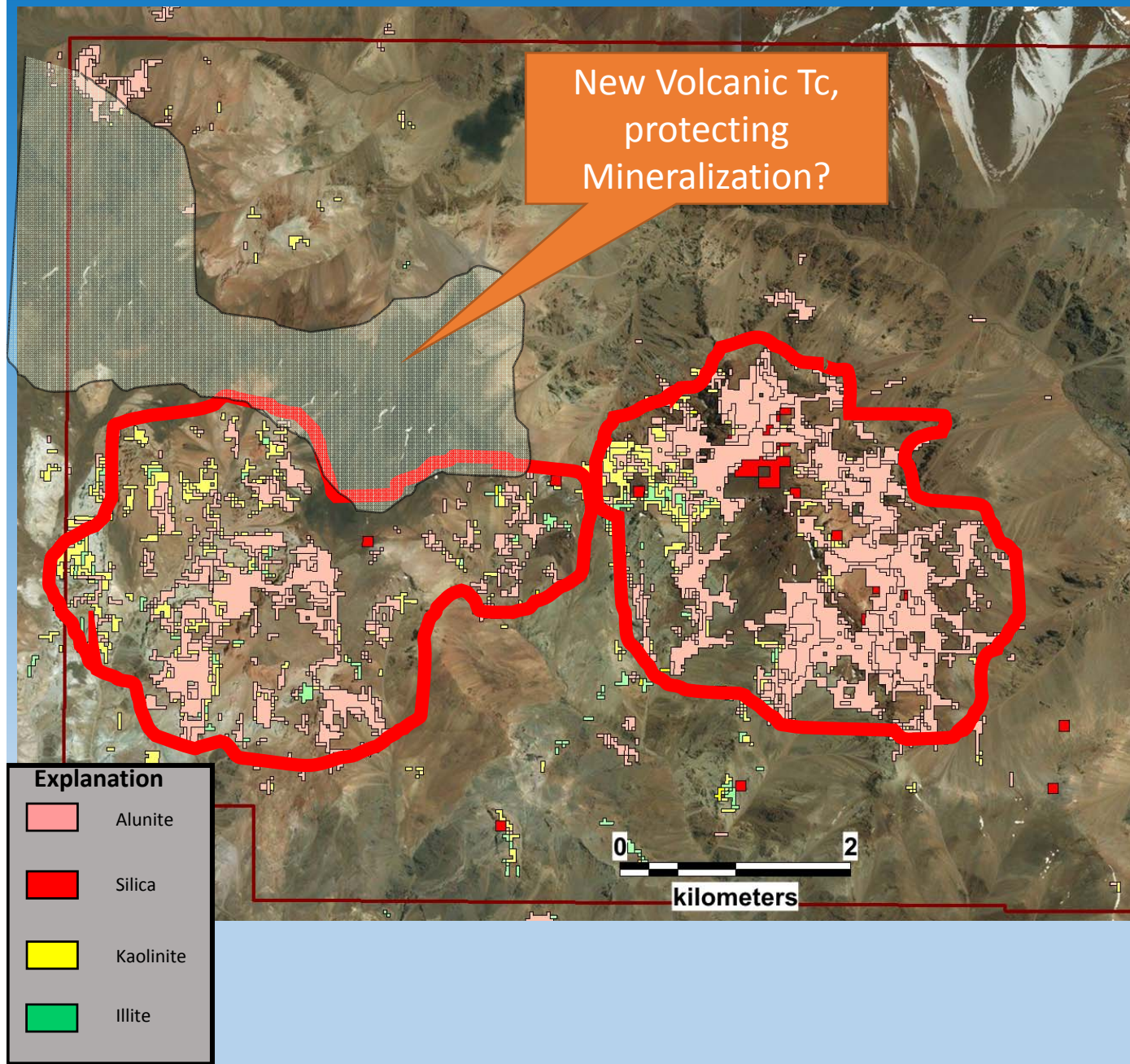
* Pink colors refer to Hydrothermal Alteration

CURA AREA:

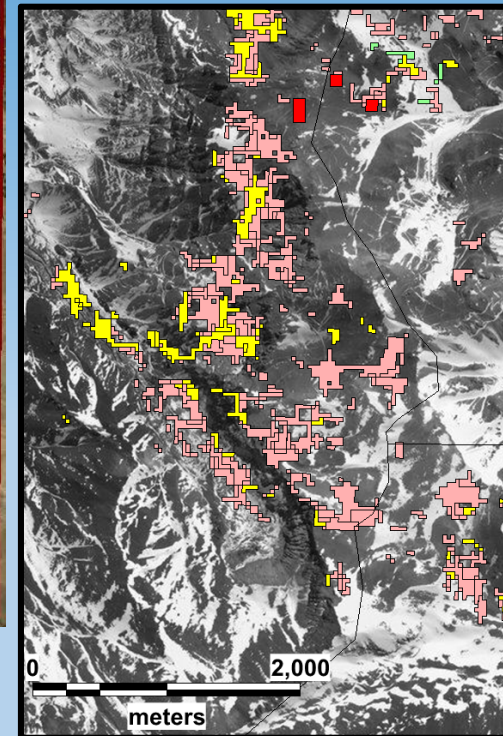


- ✓ Detail Bing Images Suggest direct potential Structures Silica Rich (Kaol-Al Aster) Illite altered Rocks on regional NW and NS Structures
- ✓ The area was owned by Teck Cominco but was Never explored, limiting to the west with La Poncha Porphyry System and Juaguelito High Sulphidation System right North

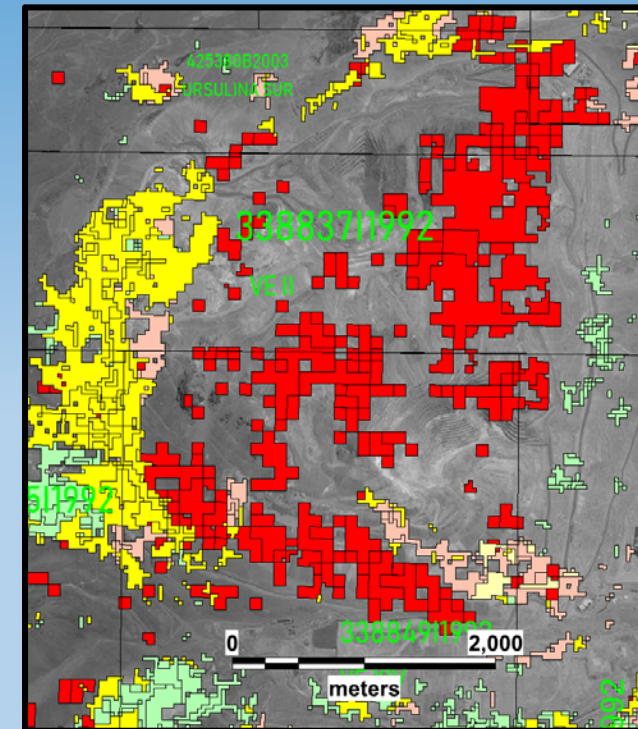
NEW ATUTIA AREA: "ALTERATION SIZE FOR MAJOR'S"



- ✓ New Granted area, target: Lithocap
- ✓ High Sulphidation (Epithermal or Porphyry)
- ✓ Mapped as Miocene in Regional Geology
- ✓ Area not explored, Aster indicate alteration Of >8km long x 2km width with Alunite at RL 3800-4000m.



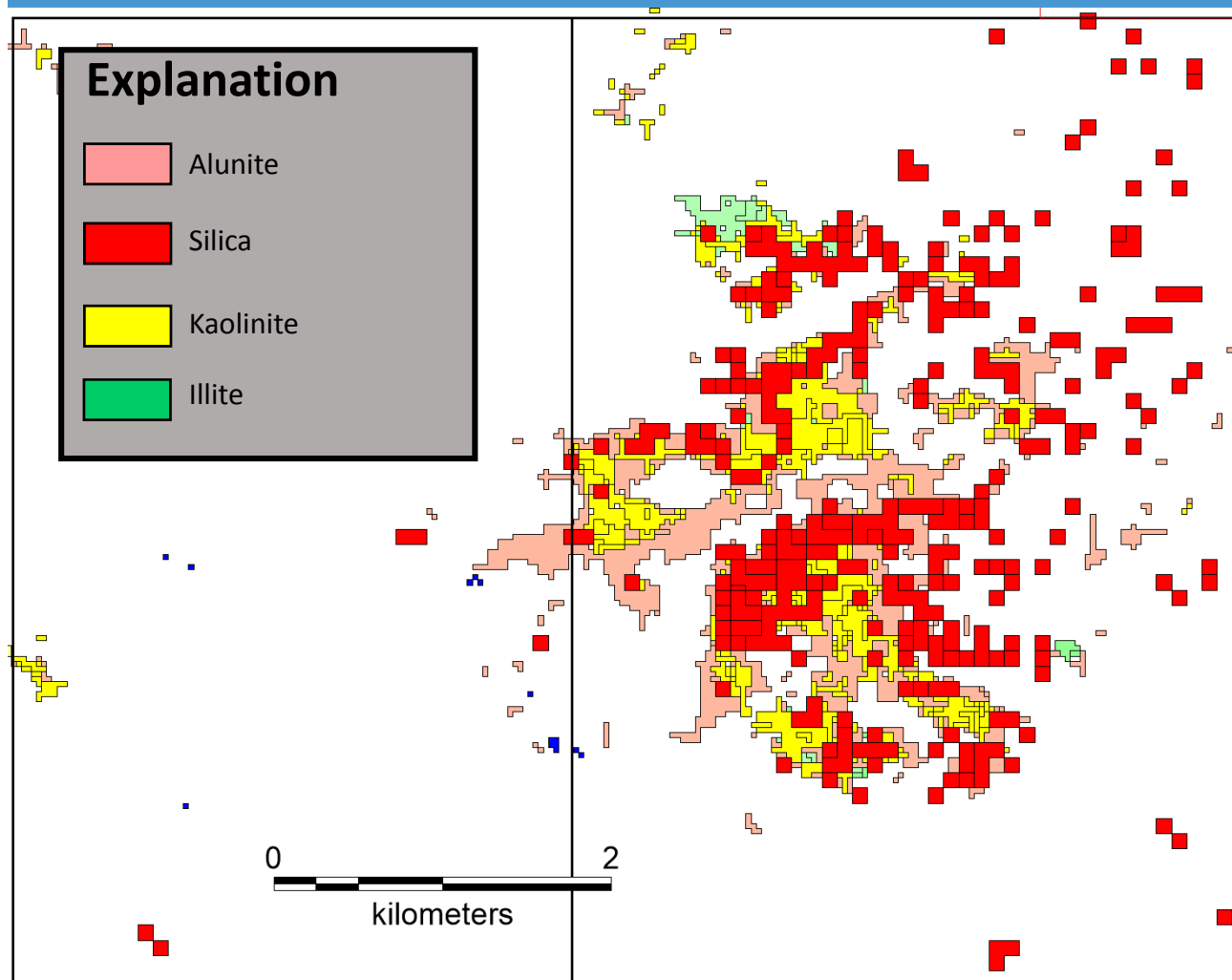
Alturas



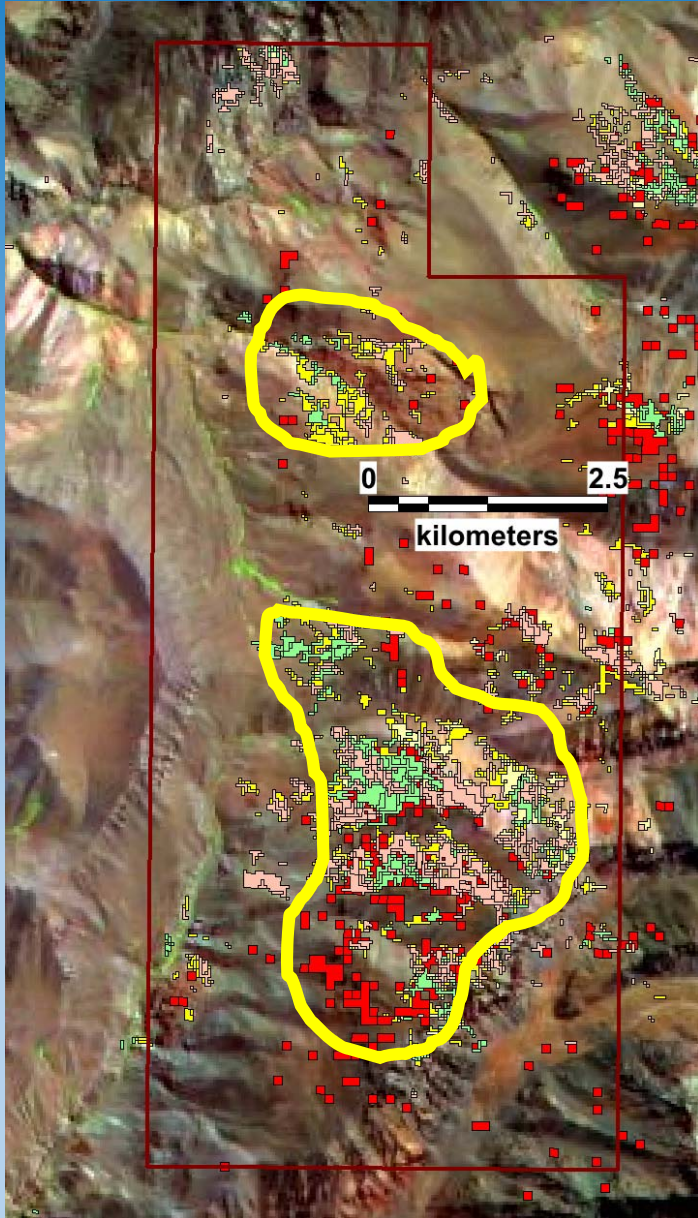
Veladero

TOTORA:

- ✓ Frontal Cordillera, Totorá corresponds to the highest Top 10 Aster Anomalies within San Juan Cordillera area(>>Alunite-Kaolinite-Silica-Kaolinite) 3km x 3km Mineralized System Never explored. Alteration System Bigger than Don Julio.
- ✓ Potential for HSE and Porphyry at depth



LA COLORADA :

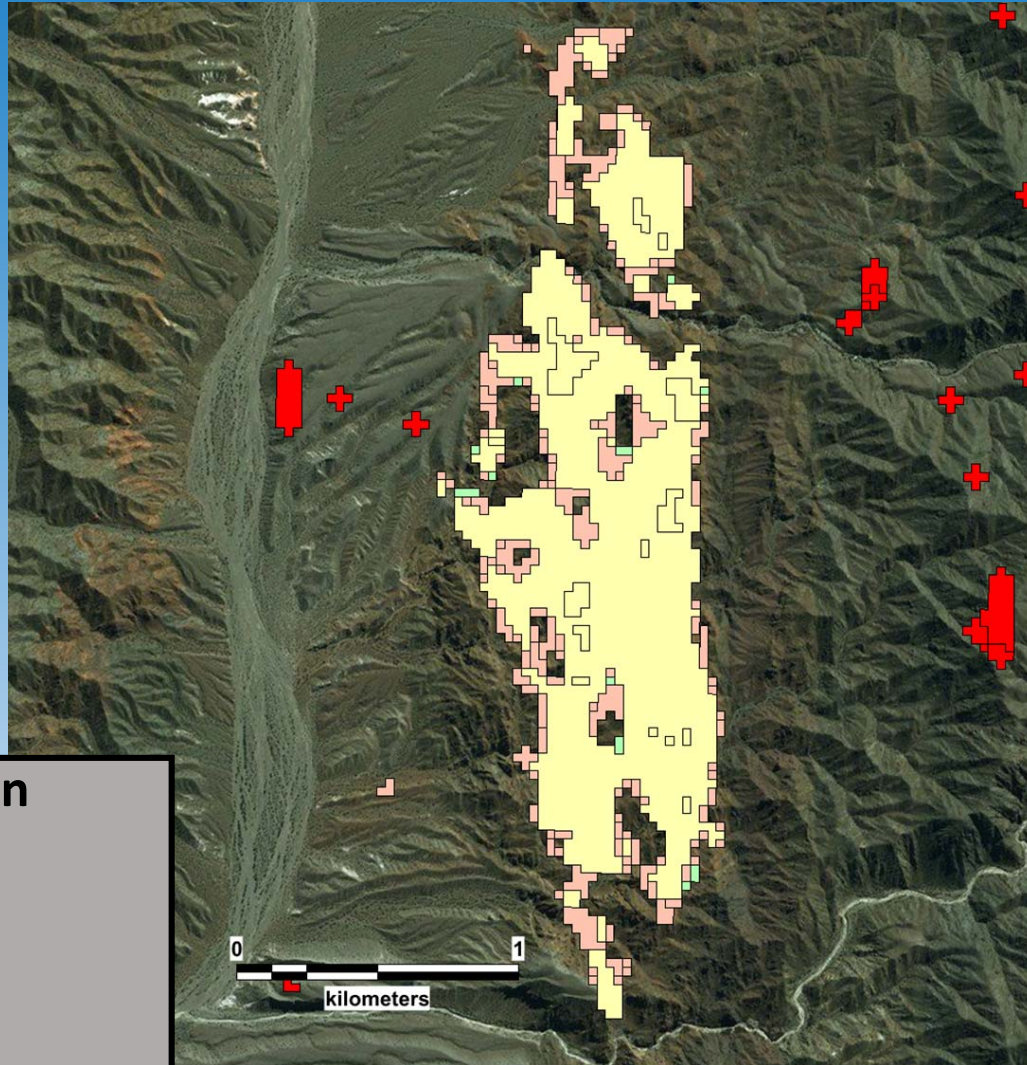


- ✓ Area recently acquired with a total area of 5491 Ha
- ✓ At least two alteration areas are strongly depicted in Aster with Alunite, Illite, Kaolinite & Silica
- ✓ Potential for HSE or Porphyry
- ✓ Area unexplored.

Explanation

	Alunite
	Silica
	Kaolinite
	Illite

GODZILLA:



Explanation

	Alunite
	Silica
	Kaolinite
	Illite

- ✓ Area recently acquired with a total area of 1000 Ha
- ✓ Very Strong Aster Anomaly depicted in Western Precordillera at 2000mRL
- ✓ Easy access 4hs from Calingasta
- ✓ Area unexplored.
- ✓ Strong Ankerite-Chalcedonic Vein structures within 5x1km

GODZILLA:



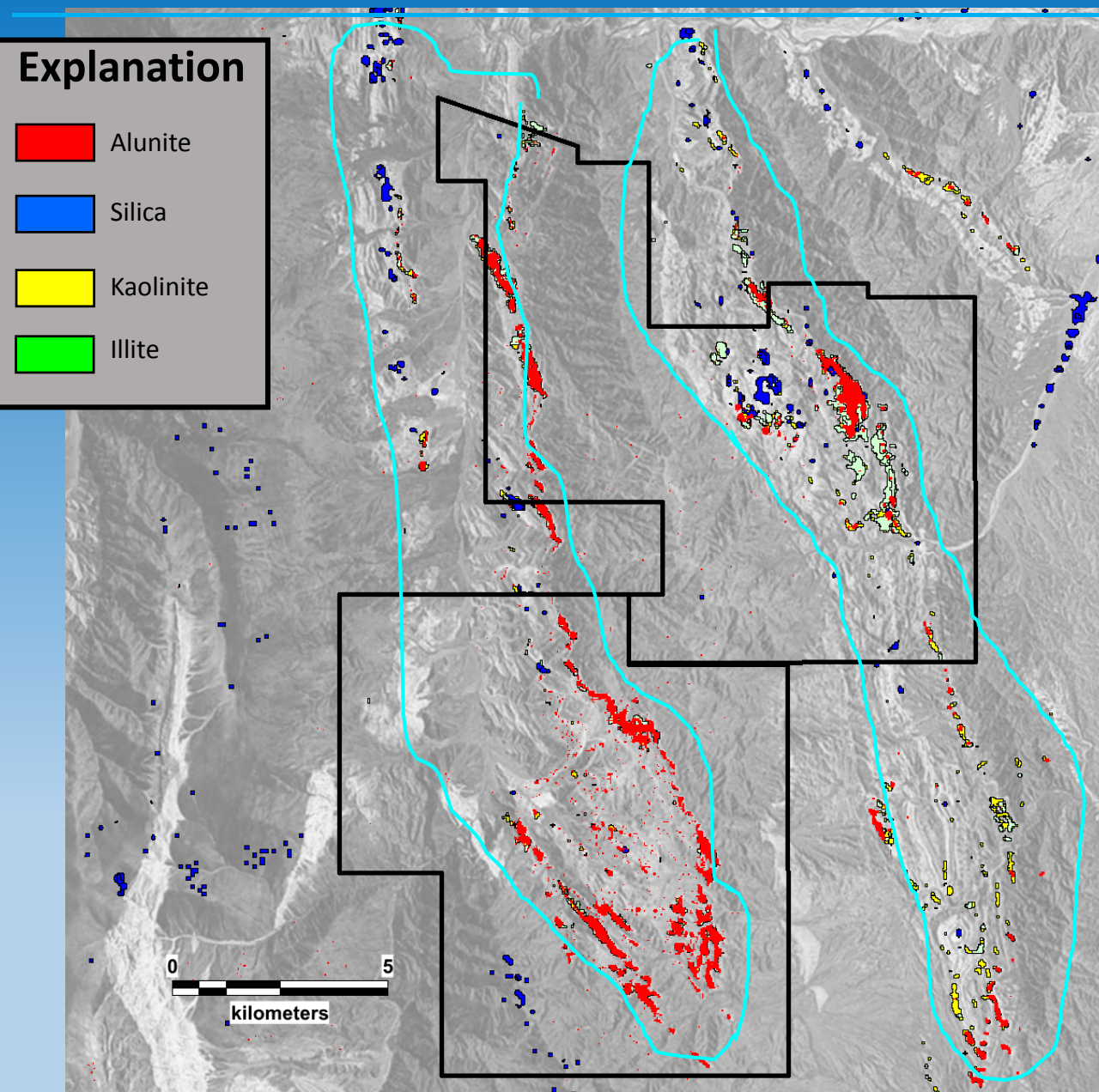
Preliminary
Geochem shows
Interesting Ba,
Ag (2.5ppm), Au 2ppb
Hg indicative of upper most
Part of Epithermal System
Untested ??

GODZILLA:

Alteration
System Ankerite-
Silica



AGUA PINTO: Skarn Potential



- ✓ Area recently acquired with a total area of 18000 Ha
- ✓ Strong Aster Anomaly depicted in Carbonate rich unit
- ✓ Easy access 2hs from San Juan Province
- ✓ Camb-Ordov-Carb-Permian calcium Rich units

FOR MORE INFORMATION CONTACT

GABRIEL BASTIAS

geb@epitermal.com

Hugo Bastias

heb@epitermal.com